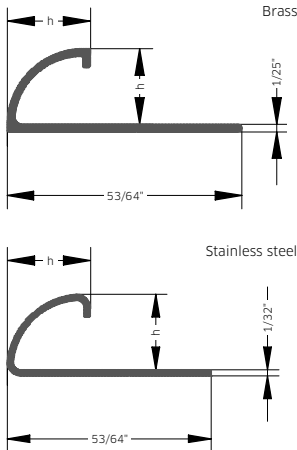




BLANKE QUARTER CIRCLE TILE TRIM

BLANKE QUARTER CIRCLE TILE TRIMS provide a decorative finish and edge protection for wall and countertop tiled edges. The brass and stainless steel BLANKE QUARTER CIRCLE form a symmetrical, curved edge and can also be used as stair nose and transition trims.



BLANKE QUARTER CIRCLE TILE TRIM

BRASS NATURAL 8.0

Length: 8.0 feet Pack: 5 pcs.

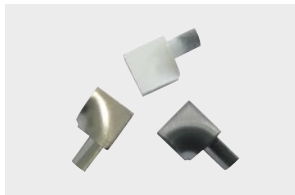
| h/in. | Part no. | \$/pc. |
|-------|---------------|--------|
| ¼ | 347-300-06025 | 60.26 |
| ⅜ | 347-300-08025 | 71.47 |
| ½ | 347-300-10025 | 84.01 |
| ⅝ | 347-300-12525 | 103.62 |
| ⅞ | 347-300-15025 | 127.47 |

BLANKE QUARTER CIRCLE TILE TRIM, OUTER CORNERS

BLANKE QUARTER CIRCLE TILE TRIM, INNER CORNERS

Expert's tip:

When ordering the BLANKE QUARTER CIRCLE TILE TRIM please do not forget the inner and outer corners!



BRASS CHROME-PLATED 8.0

Length: 8.0 feet Pack: 1 pc.

| h/in. | Part no. | \$/pc. |
|-------|---------------|--------|
| ¼ | 347-340-06025 | 99.47 |
| ⅜ | 347-340-08025 | 110.68 |
| ½ | 347-340-10025 | 123.22 |
| ⅝ | 347-340-12525 | 145.62 |
| ⅞ | 347-340-15025 | 169.48 |

BRASS LOOK CHROME-PLATED

Pack: 1 pc.

| h/in. | Part no. | \$/pc. |
|-------|-------------|--------|
| ¼ | 348-940-060 | 7.10 |
| ⅜ | 348-940-080 | 7.10 |
| ½ | 348-940-100 | 7.10 |
| ⅝ | 348-940-125 | 7.10 |

BRASS LOOK CHROME-PLATED

Pack: 1 pc.

| h/in. | Part no. | \$/pc. |
|-------|-------------|--------|
| ¼ | 349-940-060 | 7.10 |
| ⅜ | 349-940-080 | 7.10 |
| ½ | 349-940-100 | 7.10 |
| ⅝ | 349-940-125 | 7.10 |

STAINLESS STEEL NATURAL 8.0

Length: 8.0 feet Pack: 5 pcs.

| h/in. | Part no. | \$/pc. |
|-------|---------------|--------|
| ¼ | 347-280-06025 | 47.32 |
| ⅜ | 347-280-08025 | 53.62 |
| ½ | 347-280-10025 | 57.60 |
| ⅝ | 347-280-11025 | 58.67 |
| ⅞ | 347-280-12525 | 59.40 |
| 1 | 347-280-15025 | 74.30 |

STAINLESS STEEL NATURAL

Pack: 1 pc.

| h/in. | Part no. | \$/pc. |
|-------|-------------|--------|
| ¼ | 348-280-060 | 10.88 |
| ⅜ | 348-280-080 | 11.35 |
| ½ | 348-280-100 | 13.09 |
| ⅝ | 348-280-110 | 16.40 |
| ⅞ | 348-280-125 | 17.47 |
| 1 | 348-280-150 | 21.44 |

STAINLESS STEEL NATURAL

Pack: 1 pc.

| h/in. | Part no. | \$/pc. |
|-------|-------------|--------|
| ¼ | 349-280-060 | 11.67 |
| ⅜ | 349-280-080 | 11.67 |
| ½ | 349-280-100 | 11.67 |
| ⅝ | 349-280-110 | 11.67 |
| ⅞ | 349-280-125 | 11.67 |

Important note:

For orders of 50 items or more Blanke offers delivery in a display carton.



STAINLESS STEEL LOOK NATURAL

Pack: 1 pc.

| h/in. | Part no. | \$/pc. |
|-------|--------------|--------|
| ¼ | 348-9280-060 | 7.10 |
| ⅜ | 348-9280-080 | 7.10 |
| ½ | 348-9280-100 | 7.10 |
| ⅝ | 348-9280-110 | 7.10 |
| ⅞ | 348-9280-125 | 7.10 |

STAINLESS STEEL LOOK NATURAL

Pack: 1 pc.

| h/in. | Part no. | \$/pc. |
|-------|--------------|--------|
| ¼ | 349-9280-060 | 7.10 |
| ⅜ | 349-9280-080 | 7.10 |
| ½ | 349-9280-100 | 7.10 |
| ⅝ | 349-9280-110 | 7.10 |
| ⅞ | 349-9280-125 | 7.10 |

BLANKE QUARTER CIRCLE TILE TRIM

STAINLESS STEEL 8.0 BRUSHED

Length: 8.0 feet Pack: 5 pcs.

| h/in. | Part no. | \$/pc. |
|-------|----------------|--------|
| ¼ | 347-280-06025B | 59.39 |
| ⅙ | 347-280-08025B | 67.48 |
| ⅜ | 347-280-10025B | 74.15 |
| ⅞ | 347-280-11025B | 74.47 |
| ½ | 347-280-12525B | 74.88 |

BLANKE QUARTER CIRCLE TILE TRIM, OUTER CORNERS

STAINLESS STEEL BRUSHED

Pack: 1 pc.

| h/in. | Part no. | \$/pc. |
|-------|--------------|--------|
| ¼ | 348-280B-060 | 13.96 |
| ⅙ | 348-280B-080 | 14.86 |
| ⅜ | 348-280B-100 | 15.71 |
| ⅞ | 348-280B-110 | 18.76 |
| ½ | 348-280B-125 | 21.82 |

BLANKE QUARTER CIRCLE TILE TRIM, INNER CORNERS

STAINLESS STEEL BRUSHED

Pack: 1 pc.

| h/in. | Part no. | \$/pc. |
|-------|--------------|--------|
| ¼ | 349-280B-060 | 12.83 |
| ⅙ | 349-280B-080 | 12.83 |
| ⅜ | 349-280B-100 | 12.83 |
| ⅞ | 349-280B-110 | 12.83 |
| ½ | 349-280B-125 | 12.83 |

Important note:

For orders of 50 items or more Blanke offers delivery in a display carton.



STAINLESS STEEL LOOK BRUSHED

Pack: 1 pc.

| h/in. | Part no. | \$/pc. |
|-------|--------------|--------|
| ¼ | 348-928B-060 | 7.10 |
| ⅙ | 348-928B-080 | 7.10 |
| ⅜ | 348-928B-100 | 7.10 |
| ⅞ | 348-928B-110 | 7.10 |
| ½ | 348-928B-125 | 7.10 |

STAINLESS STEEL LOOK BRUSHED

Pack: 1 pc.

| h/in. | Part no. | \$/pc. |
|-------|--------------|--------|
| ¼ | 349-928B-060 | 7.10 |
| ⅙ | 349-928B-080 | 7.10 |
| ⅜ | 349-928B-100 | 7.10 |
| ⅞ | 349-928B-110 | 7.10 |
| ½ | 349-928B-125 | 7.10 |

STAINLESS STEEL 8.0 POLISHED

Length: 8.0 feet Pack: 5 pcs.

| h/in. | Part no. | \$/pc. |
|-------|---------------|--------|
| ¼ | 347-286-06025 | 68.67 |
| ⅙ | 347-286-08025 | 75.35 |
| ⅜ | 347-286-10025 | 82.18 |
| ⅞ | 347-286-11025 | 84.89 |
| ½ | 347-286-12525 | 88.85 |
| ⅞ | 347-286-15025 | 96.10 |

STAINLESS STEEL POLISHED

Pack: 1 pc.

| h/in. | Part no. | \$/pc. |
|-------|-------------|--------|
| ¼ | 348-286-060 | 13.96 |
| ⅙ | 348-286-080 | 14.86 |
| ⅜ | 348-286-100 | 15.71 |
| ⅞ | 348-286-110 | 18.76 |
| ½ | 348-286-125 | 21.82 |

STAINLESS STEEL POLISHED

Pack: 1 pc.

| h/in. | Part no. | \$/pc. |
|-------|-------------|--------|
| ¼ | 349-286-060 | 12.83 |
| ⅙ | 349-286-080 | 12.83 |
| ⅜ | 349-286-100 | 12.83 |
| ⅞ | 349-286-110 | 12.83 |
| ½ | 349-286-125 | 12.83 |

STAINLESS STEEL LOOK POLISHED

Pack: 1 pc.

| h/in. | Part no. | \$/pc. |
|-------|--------------|--------|
| ¼ | 348-9286-060 | 7.10 |
| ⅙ | 348-9286-080 | 7.10 |
| ⅜ | 348-9286-100 | 7.10 |
| ⅞ | 348-9286-110 | 7.10 |
| ½ | 348-9286-125 | 7.10 |

STAINLESS STEEL LOOK POLISHED

Pack: 1 pc.

| h/in. | Part no. | \$/pc. |
|-------|--------------|--------|
| ¼ | 349-9286-060 | 7.10 |
| ⅙ | 349-9286-080 | 7.10 |
| ⅜ | 349-9286-100 | 7.10 |
| ⅞ | 349-9286-110 | 7.10 |
| ½ | 349-9286-125 | 7.10 |

BLANKE QUARTER CIRCLE TILE TRIM, FLAT CAP

STAINLESS STEEL NATURAL

Pack: 1 pc.

| h/in. | Part no. | \$/pc. |
|-------|-------------|--------|
| ¼ | 350-280-060 | 20.34 |
| ⅙ | 350-280-080 | 21.99 |
| ⅜ | 350-280-100 | 22.76 |
| ⅞ | 350-280-110 | 23.26 |
| ½ | 350-280-125 | 23.64 |
| ⅞ | 350-280-150 | 24.55 |

STAINLESS STEEL POLISHED

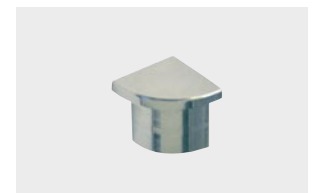
Pack: 1 pc.

| h/in. | Part no. | \$/pc. |
|-------|-------------|--------|
| ¼ | 350-286-060 | 27.31 |
| ⅙ | 350-286-080 | 28.95 |
| ⅜ | 350-286-100 | 29.71 |
| ⅞ | 350-286-110 | 30.22 |
| ½ | 350-286-125 | 30.59 |

STAINLESS STEEL BRUSHED

Pack: 1 pc.

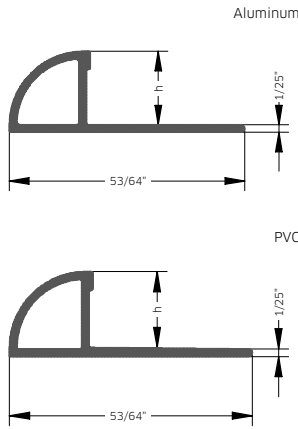
| h/in. | Part no. | \$/pc. |
|-------|--------------|--------|
| ¼ | 350-280B-060 | 27.31 |
| ⅙ | 350-280B-080 | 28.95 |
| ⅜ | 350-280B-100 | 29.71 |
| ⅞ | 350-280B-110 | 30.22 |
| ½ | 350-280B-125 | 30.59 |





BLANKE QUARTER CIRCLE TILE TRIM

BLANKE QUARTER CIRCLE TRIMS are made of high-quality aluminum or PVC and bring decorative finishes and edge protection to tiled edges. The vertical joint spacer of BLANKE QUARTER CIRCLE TILE TRIM provides superior structural strength and easy tile alignment. The variety of finishes available allows for ease in color coordination and creating decorative designs.



BLANKE QUARTER CIRCLE TILE TRIM

| ALUMINUM | | |
|------------------------|---------------|--------------|
| SATIN SILVER, ANODIZED | | |
| Length: 8.0 feet | | Pack: 5 pcs. |
| h/in. | Part no. | \$/pc. |
| ¼ | 347-410-06025 | 17.10 |
| ⅙ | 347-410-08025 | 19.55 |
| ⅜ | 347-410-10025 | 21.98 |
| ⅚ | 347-410-11025 | 23.29 |
| ½ | 347-410-12525 | 26.24 |

BLANKE QUARTER CIRCLE TILE TRIM, OUTER CORNERS

| ALUMINUM | | |
|------------------------|---------------|-------------|
| SATIN SILVER, ANODIZED | | |
| Length: 8.0 feet | | Pack: 1 pc. |
| h/in. | Part no. | \$/pc. |
| ¼ | 348-410AL-060 | 12.29 |
| ⅙ | 348-410AL-080 | 12.29 |
| ⅜ | 348-410AL-100 | 12.29 |
| ⅚ | 348-410AL-110 | 12.29 |
| ½ | 348-410AL-125 | 12.29 |

BLANKE QUARTER CIRCLE TILE TRIM, INNER CORNERS

| ALUMINUM | | |
|------------------------|---------------|-------------|
| SATIN SILVER, ANODIZED | | |
| Length: 8.0 feet | | Pack: 1 pc. |
| h/in. | Part no. | \$/pc. |
| ¼ | 349-410AL-060 | 16.53 |
| ⅙ | 349-410AL-080 | 16.53 |
| ⅜ | 349-410AL-100 | 16.53 |
| ⅚ | 349-410AL-110 | 16.53 |
| ½ | 349-410AL-125 | 16.53 |

ALUMINUM LOOK SATIN SILVER

| ALUMINUM LOOK | | |
|------------------|-------------|-------------|
| SATIN SILVER | | |
| Length: 8.0 feet | | Pack: 1 pc. |
| h/in. | Part no. | \$/pc. |
| ¼ | 348-410-060 | 7.10 |
| ⅙ | 348-410-080 | 7.10 |
| ⅜ | 348-410-100 | 7.10 |
| ⅚ | 348-410-110 | 7.10 |
| ½ | 348-410-125 | 7.10 |

ALUMINUM LOOK SATIN SILVER

| ALUMINUM LOOK | | |
|------------------|-------------|-------------|
| SATIN SILVER | | |
| Length: 8.0 feet | | Pack: 1 pc. |
| h/in. | Part no. | \$/pc. |
| ¼ | 349-410-060 | 7.10 |
| ⅙ | 349-410-080 | 7.10 |
| ⅜ | 349-410-100 | 7.10 |
| ⅚ | 349-410-110 | 7.10 |
| ½ | 349-410-125 | 7.10 |

Advantages:

- > High quality
- > Structural support provided by an integrated vertical support piece under the curved profile (Extruded aluminum and PVC)
- > Superior weather resistance due to the durable baked-on plastic coating

Expert's tip:

When ordering the BLANKE QUARTER CIRCLE TILE TRIM please do not forget the inner and outer corners!



ALUMINUM SHINY SILVER, ANODIZED

| ALUMINUM | | |
|------------------------|---------------|--------------|
| SHINY SILVER, ANODIZED | | |
| Length: 8.0 feet | | Pack: 5 pcs. |
| h/in. | Part no. | \$/pc. |
| ¼ | 347-430-06025 | 20.21 |
| ⅙ | 347-430-08025 | 22.62 |
| ⅜ | 347-430-10025 | 25.51 |
| ⅚ | 347-430-11025 | 26.71 |
| ½ | 347-430-12525 | 28.87 |

ALUMINUM LOOK SHINY SILVER

| ALUMINUM LOOK | | |
|------------------|-------------|-------------|
| SHINY SILVER | | |
| Length: 8.0 feet | | Pack: 1 pc. |
| h/in. | Part no. | \$/pc. |
| ¼ | 348-930-060 | 7.10 |
| ⅙ | 348-930-080 | 7.10 |
| ⅜ | 348-930-100 | 7.10 |
| ⅚ | 348-930-110 | 7.10 |
| ½ | 348-930-125 | 7.10 |

ALUMINUM LOOK SHINY SILVER

| ALUMINUM LOOK | | |
|------------------|-------------|-------------|
| SHINY SILVER | | |
| Length: 8.0 feet | | Pack: 1 pc. |
| h/in. | Part no. | \$/pc. |
| ¼ | 349-930-060 | 7.10 |
| ⅙ | 349-930-080 | 7.10 |
| ⅜ | 349-930-100 | 7.10 |
| ⅚ | 349-930-110 | 7.10 |
| ½ | 349-930-125 | 7.10 |

ALUMINUM STAINLESS STEEL METALLIC, POWDER-COATED

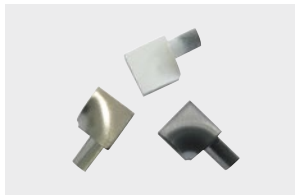
| ALUMINUM | | |
|---|----------------|--------------|
| STAINLESS STEEL METALLIC, POWDER-COATED | | |
| Length: 8.0 feet | | Pack: 5 pcs. |
| h/in. | Part no. | \$/pc. |
| ¼ | 347-4502-06025 | 18.90 |
| ⅙ | 347-4502-08025 | 21.40 |
| ⅜ | 347-4502-10025 | 23.98 |
| ⅚ | 347-4502-11025 | 25.01 |
| ½ | 347-4502-12525 | 27.29 |

ALUMINUM LOOK STAINLESS STEEL METALLIC, POWDER-COATED

| ALUMINUM LOOK | | |
|---|--------------|-------------|
| STAINLESS STEEL METALLIC, POWDER-COATED | | |
| Length: 8.0 feet | | Pack: 1 pc. |
| h/in. | Part no. | \$/pc. |
| ¼ | 348-9502-060 | 7.53 |
| ⅙ | 348-9502-080 | 7.53 |
| ⅜ | 348-9502-100 | 7.53 |
| ⅚ | 348-9502-110 | 7.53 |
| ½ | 348-9502-125 | 7.53 |

ALUMINUM LOOK STAINLESS STEEL METALLIC, POWDER-COATED

| ALUMINUM LOOK | | |
|---|--------------|-------------|
| STAINLESS STEEL METALLIC, POWDER-COATED | | |
| Length: 8.0 feet | | Pack: 1 pc. |
| h/in. | Part no. | \$/pc. |
| ¼ | 349-9502-060 | 7.53 |
| ⅙ | 349-9502-080 | 7.53 |
| ⅜ | 349-9502-100 | 7.53 |
| ⅚ | 349-9502-110 | 7.53 |
| ½ | 349-9502-125 | 7.53 |



BLANKE QUARTER CIRCLE TILE TRIM

ALUMINUM 8.0 SATIN GOLD, ANODIZED

Length: 8.0 feet Pack: 5 pcs.

| h/in. | Part no. | \$/pc. |
|-------|---------------|--------|
| ¼ | 347-420-06025 | 17.74 |
| ⅜ | 347-420-08025 | 20.20 |
| ½ | 347-420-10025 | 22.63 |
| ¾ | 347-420-12525 | 26.24 |

ALUMINUM 8.0 SHINY GOLD, ANODIZED

Length: 8.0 feet Pack: 5 pcs.

| h/in. | Part no. | \$/pc. |
|-------|---------------|--------|
| ¼ | 347-480-06025 | 19.93 |
| ⅜ | 347-480-08025 | 22.51 |
| ½ | 347-480-10025 | 25.07 |
| ¾ | 347-480-12525 | 28.93 |

ALUMINUM 8.0 JASMINE, POWDER-COATED

Length: 8.0 feet Pack: 5 pcs.

| h/in. | Part no. | \$/pc. |
|-------|----------------|--------|
| ¼ | 347-4501-06025 | 18.39 |
| ⅜ | 347-4501-08025 | 19.55 |
| ½ | 347-4501-10025 | 21.35 |
| ¾ | 347-4501-12525 | 23.26 |

ALUMINUM 8.0 WHITE, POWDER-COATED

Length: 8.0 feet Pack: 5 pcs.

| h/in. | Part no. | \$/pc. |
|-------|---------------|--------|
| ¼ | 347-450-06025 | 18.39 |
| ⅜ | 347-450-08025 | 19.55 |
| ½ | 347-450-10025 | 21.35 |
| ¾ | 347-450-11025 | 22.72 |
| 1 | 347-450-12525 | 23.26 |

ALUMINUM 8.0 MANHATTAN GRAY, POWDER-COATED

Length: 8.0 feet Pack: 5 pcs.

| h/in. | Part no. | \$/pc. |
|-------|----------------|--------|
| ¼ | 347-4591-06025 | 18.39 |
| ⅜ | 347-4591-08025 | 19.55 |
| ½ | 347-4591-10025 | 21.35 |
| ¾ | 347-4591-12525 | 23.26 |

ALUMINUM 8.0 GRAPHITE BLACK, POWDER-COATED

Length: 8.0 feet Pack: 5 pcs.

| h/in. | Part no. | \$/pc. |
|-------|---------------|--------|
| ¼ | 347-456-06025 | 18.39 |
| ⅜ | 347-456-08025 | 19.55 |
| ½ | 347-456-10025 | 21.35 |
| ¾ | 347-456-12525 | 23.26 |

BLANKE QUARTER CIRCLE TILE TRIM, OUTER CORNERS

ALUMINUM LOOK SATIN GOLD

Pack: 1 pc.

| h/in. | Part no. | \$/pc. |
|-------|-------------|--------|
| ¼ | 348-920-060 | 7.10 |
| ⅜ | 348-920-080 | 7.10 |
| ½ | 348-920-100 | 7.10 |
| ¾ | 348-920-125 | 7.10 |

ALUMINUM LOOK SHINY GOLD

Pack: 1 pc.

| h/in. | Part no. | \$/pc. |
|-------|-------------|--------|
| ¼ | 348-980-060 | 7.10 |
| ⅜ | 348-980-080 | 7.10 |
| ½ | 348-980-100 | 7.10 |
| ¾ | 348-980-125 | 7.10 |

ALUMINUM LOOK JASMINE, POWDER-COATED

Pack: 1 pc.

| h/in. | Part no. | \$/pc. |
|-------|--------------|--------|
| ¼ | 348-9501-060 | 7.10 |
| ⅜ | 348-9501-080 | 7.10 |
| ½ | 348-9501-100 | 7.10 |
| ¾ | 348-9501-125 | 7.10 |

ALUMINUM LOOK WHITE, POWDER-COATED

Pack: 1 pc.

| h/in. | Part no. | \$/pc. |
|-------|-------------|--------|
| ¼ | 348-950-060 | 7.10 |
| ⅜ | 348-950-080 | 7.10 |
| ½ | 348-950-100 | 7.10 |
| ¾ | 348-950-110 | 7.10 |
| 1 | 348-950-125 | 7.10 |

ALUMINUM LOOK MANHATTAN GRAY, POWDER-COATED

Pack: 1 pc.

| h/in. | Part no. | \$/pc. |
|-------|--------------|--------|
| ¼ | 348-9591-060 | 7.10 |
| ⅜ | 348-9591-080 | 7.10 |
| ½ | 348-9591-100 | 7.10 |
| ¾ | 348-9591-125 | 7.10 |

ALUMINUM LOOK GRAPHITE BLACK, POWDER-COATED

Pack: 1 pc.

| h/in. | Part no. | \$/pc. |
|-------|-------------|--------|
| ¼ | 348-956-060 | 5.34 |
| ⅜ | 348-956-080 | 5.34 |
| ½ | 348-956-100 | 5.34 |
| ¾ | 348-956-125 | 5.34 |

BLANKE QUARTER CIRCLE TILE TRIM, INNER CORNERS

ALUMINUM LOOK SATIN GOLD

Pack: 1 pc.

| h/in. | Part no. | \$/pc. |
|-------|-------------|--------|
| ¼ | 349-920-060 | 7.10 |
| ⅜ | 349-920-080 | 7.10 |
| ½ | 349-920-100 | 7.10 |
| ¾ | 349-920-125 | 7.10 |

ALUMINUM LOOK SHINY GOLD

Pack: 1 pc.

| h/in. | Part no. | \$/pc. |
|-------|-------------|--------|
| ¼ | 349-980-060 | 7.10 |
| ⅜ | 349-980-080 | 7.10 |
| ½ | 349-980-100 | 7.10 |
| ¾ | 349-980-125 | 7.10 |

ALUMINUM LOOK JASMINE, POWDER-COATED

Pack: 1 pc.

| h/in. | Part no. | \$/pc. |
|-------|--------------|--------|
| ¼ | 349-9501-060 | 7.10 |
| ⅜ | 349-9501-080 | 7.10 |
| ½ | 349-9501-100 | 7.10 |
| ¾ | 349-9501-125 | 7.10 |

ALUMINUM LOOK WHITE, POWDER-COATED

Pack: 1 pc.

| h/in. | Part no. | \$/pc. |
|-------|-------------|--------|
| ¼ | 349-950-060 | 7.10 |
| ⅜ | 349-950-080 | 7.10 |
| ½ | 349-950-100 | 7.10 |
| ¾ | 349-950-110 | 7.10 |
| 1 | 349-950-125 | 7.10 |

ALUMINUM LOOK MANHATTAN GRAY, POWDER-COATED

Pack: 1 pc.

| h/in. | Part no. | \$/pc. |
|-------|--------------|--------|
| ¼ | 349-9591-060 | 7.10 |
| ⅜ | 349-9591-080 | 7.10 |
| ½ | 349-9591-100 | 7.10 |
| ¾ | 349-9591-125 | 7.10 |

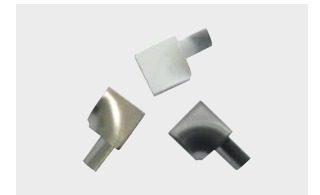
ALUMINUM LOOK GRAPHITE BLACK, POWDER-COATED

Pack: 1 pc.

| h/in. | Part no. | \$/pc. |
|-------|-------------|--------|
| ¼ | 349-956-060 | 5.34 |
| ⅜ | 349-956-080 | 5.34 |
| ½ | 349-956-100 | 5.34 |
| ¾ | 349-956-125 | 5.34 |

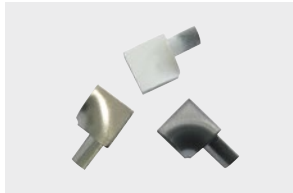
Expert's tip:

When ordering the BLANKE QUARTER CIRCLE TILE TRIM please do not forget the inner and outer corners!



Expert's tip:

When ordering the BLANKE QUARTER CIRCLE TILE TRIM please do not forget the inner and outer corners!



BLANKE QUARTER CIRCLE TILE TRIM

ALUMINUM 8.0
ROYAL CHAMPAGNE, ANODIZED

Length: 8.0 feet Pack: 5 pcs.

| h/in. | Part no. | \$/pc. |
|-------|---------------|--------|
| ¼ | 347-470-06025 | 19.91 |
| ⅜ | 347-470-08025 | 22.53 |
| ½ | 347-470-10025 | 25.32 |
| ⅝ | 347-470-11025 | 26.70 |
| ¾ | 347-470-12525 | 28.69 |

ALUMINUM 8.0
TITANIUM BRONZE, ANODIZED

Length: 8.0 feet Pack: 5 pcs.

| h/in. | Part no. | \$/pc. |
|-------|---------------|--------|
| ¼ | 347-446-06025 | 20.29 |
| ⅜ | 347-446-08025 | 22.53 |
| ½ | 347-446-10025 | 25.32 |
| ⅝ | 347-446-11025 | 26.70 |
| ¾ | 347-446-12525 | 28.69 |

ALUMINUM 8.0
OIL RUBBED BRONZE, ANODIZED

Length: 8.0 feet Pack: 5 pcs.

| h/in. | Part no. | \$/pc. |
|-------|---------------|--------|
| ⅜ | 347-449-08025 | 25.86 |
| ½ | 347-449-10025 | 26.59 |
| ⅝ | 347-449-11025 | 27.61 |
| ¾ | 347-449-12525 | 30.08 |

ALUMINUM 8.0
BRUSHED NICKEL, ANODIZED

Length: 8.0 feet Pack: 5 pcs.

| h/in. | Part no. | \$/pc. |
|-------|----------------|--------|
| ¼ | 347-420B-06025 | 23.05 |
| ⅜ | 347-420B-08025 | 24.68 |
| ½ | 347-420B-10025 | 27.09 |
| ⅝ | 347-420B-11025 | 27.65 |
| ¾ | 347-420B-12525 | 31.69 |

PVC 8.0
WHITE

Length: 8.0 feet Pack: 5 pcs.

| h/in. | Part no. | \$/pc. |
|-------|---------------|--------|
| ¼ | 347-501-06025 | 7.46 |
| ⅜ | 347-501-08025 | 7.70 |
| ½ | 347-501-10025 | 8.10 |
| ⅝ | 347-501-11025 | 8.60 |
| ¾ | 347-501-12525 | 9.94 |

BLANKE QUARTER CIRCLE TILE TRIM, OUTER CORNERS

ALUMINUM LOOK 8.0
ROYAL CHAMPAGNE

Pack: 1 pc.

| h/in. | Part no. | \$/pc. |
|-------|-------------|--------|
| ¼ | 348-470-060 | 7.10 |
| ⅜ | 348-470-080 | 7.10 |
| ½ | 348-470-100 | 7.10 |
| ⅝ | 348-470-110 | 7.10 |
| ¾ | 348-470-125 | 7.10 |

ALUMINUM 8.0
TITANIUM BRONZE, ANODIZED

Pack: 1 pc.

| h/in. | Part no. | \$/pc. |
|-------|-------------|--------|
| ¼ | 348-446-060 | 11.90 |
| ⅜ | 348-446-080 | 11.90 |
| ½ | 348-446-100 | 11.90 |
| ⅝ | 348-446-110 | 11.90 |
| ¾ | 348-446-125 | 11.90 |

ALUMINUM 8.0
OIL RUBBED BRONZE, ANODIZED

Pack: 1 pc.

| h/in. | Part no. | \$/pc. |
|-------|-------------|--------|
| ⅜ | 348-449-080 | 13.59 |
| ½ | 348-449-100 | 13.59 |
| ⅝ | 348-449-110 | 13.59 |
| ¾ | 348-449-125 | 13.59 |

ALUMINUM LOOK 8.0
BRUSHED NICKEL

Pack: 1 pc.

| h/in. | Part no. | \$/pc. |
|-------|--------------|--------|
| ¼ | 348-420B-060 | 6.91 |
| ⅜ | 348-420B-080 | 6.91 |
| ½ | 348-420B-100 | 6.91 |
| ⅝ | 348-420B-110 | 6.91 |
| ¾ | 348-420B-125 | 6.91 |

PVC 8.0
WHITE

Pack: 1 pc.

| h/in. | Part no. | \$/pc. |
|-------|-------------|--------|
| ¼ | 348-501-060 | 2.48 |
| ⅜ | 348-501-080 | 2.48 |
| ½ | 348-501-100 | 2.48 |
| ⅝ | 348-501-110 | 2.48 |
| ¾ | 348-501-125 | 2.48 |

BLANKE QUARTER CIRCLE TILE TRIM, INNER CORNERS

ALUMINUM LOOK 8.0
ROYAL CHAMPAGNE

Pack: 1 pc.

| h/in. | Part no. | \$/pc. |
|-------|-------------|--------|
| ¼ | 349-470-060 | 7.10 |
| ⅜ | 349-470-080 | 7.10 |
| ½ | 349-470-100 | 7.10 |
| ⅝ | 349-470-110 | 7.10 |
| ¾ | 349-470-125 | 7.10 |

ALUMINUM 8.0
TITANIUM BRONZE, ANODIZED

Pack: 1 pc.

| h/in. | Part no. | \$/pc. |
|-------|-------------|--------|
| ¼ | 349-446-060 | 11.90 |
| ⅜ | 349-446-080 | 11.90 |
| ½ | 349-446-100 | 11.90 |
| ⅝ | 349-446-110 | 11.90 |
| ¾ | 349-446-125 | 11.90 |

ALUMINUM 8.0
OIL RUBBED BRONZE, ANODIZED

Pack: 1 pc.

| h/in. | Part no. | \$/pc. |
|-------|-------------|--------|
| ⅜ | 349-449-080 | 13.59 |
| ½ | 349-449-100 | 13.59 |
| ⅝ | 349-449-110 | 13.59 |
| ¾ | 349-449-125 | 13.59 |

ALUMINUM LOOK 8.0
BRUSHED NICKEL

Pack: 1 pc.

| h/in. | Part no. | \$/pc. |
|-------|--------------|--------|
| ¼ | 349-420B-060 | 6.91 |
| ⅜ | 349-420B-080 | 6.91 |
| ½ | 349-420B-100 | 6.91 |
| ⅝ | 349-420B-110 | 6.91 |
| ¾ | 349-420B-125 | 6.91 |

PVC 8.0
WHITE

Pack: 1 pc.

| h/in. | Part no. | \$/pc. |
|-------|-------------|--------|
| ¼ | 349-501-060 | 2.48 |
| ⅜ | 349-501-080 | 2.48 |
| ½ | 349-501-100 | 2.48 |
| ⅝ | 349-501-110 | 2.48 |
| ¾ | 349-501-125 | 2.48 |

**BLANKE QUARTER
CIRCLE TILE TRIM**

PVC **8.0**
JASMINE

Length: 8.0 feet Pack: 5 pcs.

| h/in. | Part no. | \$/pc. |
|-------|----------------|--------|
| ¼ | 347-5011-06025 | 7.46 |
| ⅜ | 347-5011-08025 | 7.70 |
| ½ | 347-5011-10025 | 8.10 |
| ⅝ | 347-5011-11025 | 8.60 |
| ¾ | 347-5011-12525 | 9.94 |

**BLANKE QUARTER
CIRCLE TILE TRIM,
OUTER CORNERS**

PVC
JASMINE

Pack: 1 pc.

| h/in. | Part no. | \$/pc. |
|-------|--------------|--------|
| ¼ | 348-5011-060 | 2.48 |
| ⅜ | 348-5011-080 | 2.48 |
| ½ | 348-5011-100 | 2.48 |
| ⅝ | 348-5011-110 | 2.48 |
| ¾ | 348-5011-125 | 2.48 |

**BLANKE QUARTER
CIRCLE TILE TRIM,
INNER CORNERS**

PVC
JASMINE

Pack: 1 pc.

| h/in. | Part no. | \$/pc. |
|-------|--------------|--------|
| ¼ | 349-5011-060 | 2.48 |
| ⅜ | 349-5011-080 | 2.48 |
| ½ | 349-5011-100 | 2.48 |
| ⅝ | 349-5011-110 | 2.48 |
| ¾ | 349-5011-125 | 2.48 |

Expert's tip:

When ordering the BLANKE QUARTER CIRCLE TILE TRIM please do not forget the inner and outer corners!



PVC **8.0**
MANHATTAN GRAY

Length: 8.0 feet Pack: 5 pcs.

| h/in. | Part no. | \$/pc. |
|-------|----------------|--------|
| ¼ | 347-5091-06025 | 7.46 |
| ⅜ | 347-5091-08025 | 7.70 |
| ½ | 347-5091-10025 | 8.10 |
| ⅝ | 347-5091-11025 | 8.60 |
| ¾ | 347-5091-12525 | 9.94 |

PVC
MANHATTAN GRAY

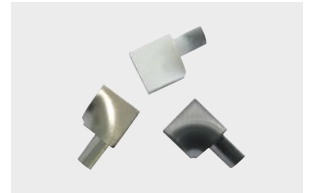
Pack: 1 pc.

| h/in. | Part no. | \$/pc. |
|-------|--------------|--------|
| ¼ | 348-5091-060 | 2.48 |
| ⅜ | 348-5091-080 | 2.48 |
| ½ | 348-5091-100 | 2.48 |
| ⅝ | 348-5091-110 | 2.48 |
| ¾ | 348-5091-125 | 2.48 |

PVC
MANHATTAN GRAY

Pack: 1 pc.

| h/in. | Part no. | \$/pc. |
|-------|--------------|--------|
| ¼ | 349-5091-060 | 2.48 |
| ⅜ | 349-5091-080 | 2.48 |
| ½ | 349-5091-100 | 2.48 |
| ⅝ | 349-5091-110 | 2.48 |
| ¾ | 349-5091-125 | 2.48 |



PVC **8.0**
SILVER GRAY

Length: 8.0 feet Pack: 5 pcs.

| h/in. | Part no. | \$/pc. |
|-------|----------------|--------|
| ¼ | 347-5092-06025 | 7.46 |
| ⅜ | 347-5092-08025 | 7.70 |
| ½ | 347-5092-10025 | 8.10 |
| ⅝ | 347-5092-11025 | 8.60 |

PVC
SILVER GRAY

Pack: 1 pc.

| h/in. | Part no. | \$/pc. |
|-------|--------------|--------|
| ¼ | 348-5092-060 | 2.48 |
| ⅜ | 348-5092-080 | 2.48 |
| ½ | 348-5092-100 | 2.48 |
| ⅝ | 348-5092-110 | 2.48 |

PVC
SILVER GRAY

Pack: 1 pc.

| h/in. | Part no. | \$/pc. |
|-------|--------------|--------|
| ¼ | 349-5092-060 | 2.48 |
| ⅜ | 349-5092-080 | 2.48 |
| ½ | 349-5092-100 | 2.48 |
| ⅝ | 349-5092-110 | 2.48 |

